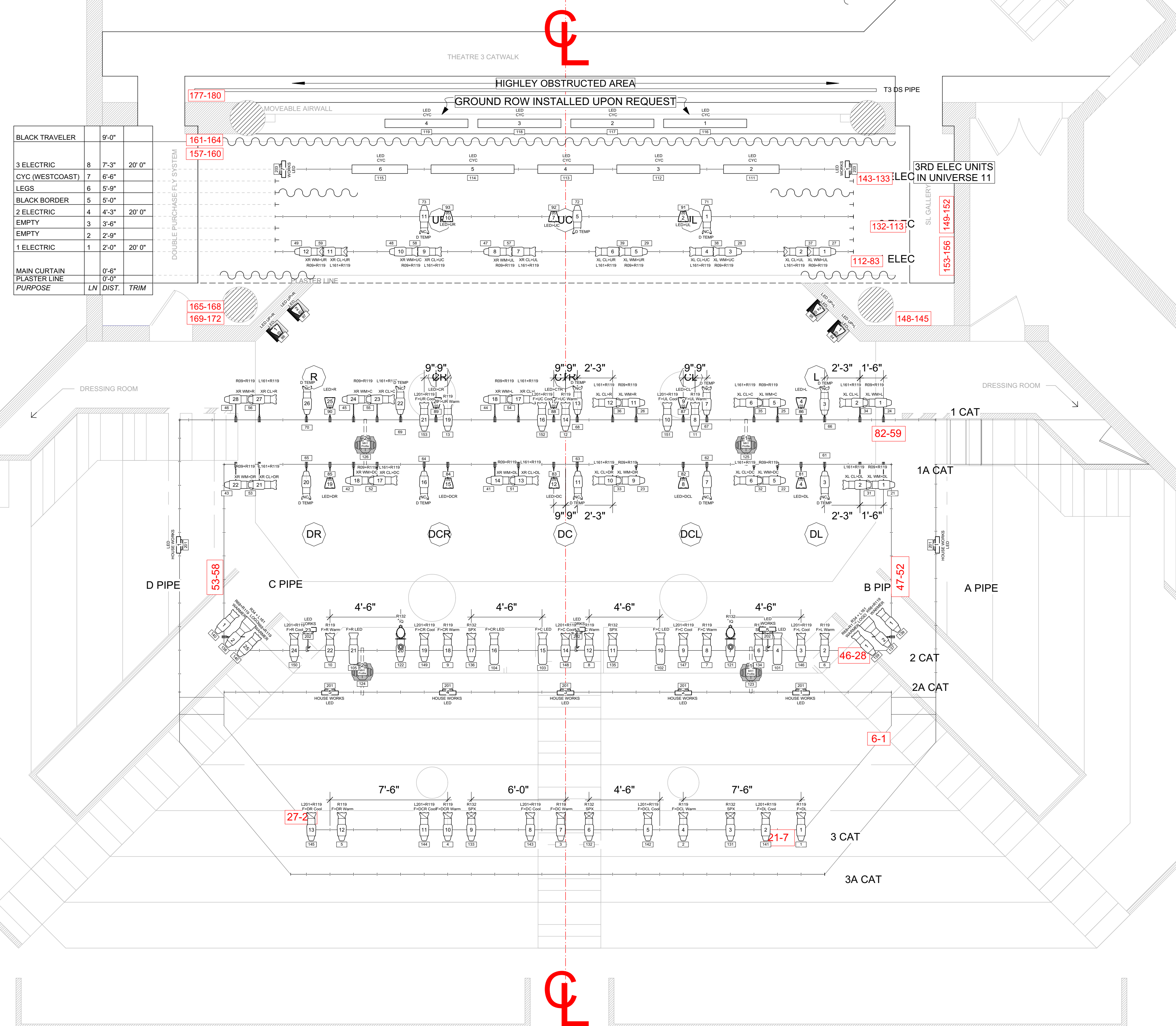


THEATER III



BLACK TRAVELER	8	7'-3"	20' 0"
3 ELECTRIC	7	6'-6"	
CYC (WESTCOAST)	6	5'-9"	
LEGS	5	5'-0"	
BLACK BORDER	4	4'-3"	20' 0"
2 ELECTRIC	3	3'-6"	
EMPTY	2	2'-9"	
1 ELECTRIC	1	2'-0"	20' 0"
MAIN CURTAIN		0'-6"	
PLASTER LINE		0'-0"	
PURPOSE	LN	DIST.	TRIM

KEY

ETC

- 10deg (575w)
- 19deg (575w)
- 26deg (575w)
- 36deg (575w)
- 50deg (575w)
- Color Source Par MRF (180w)
- Color Source Par WRF (180w)
- Selador Vivid-R 42" (500w)
- Selador Vivid-R 63" (500w)

MARTIN

- RUSH MH1 PROFILE + LED (180W)

CHROMA Q

- STUDIO FORCE II V12 (150w) w/BORDER LENS

ACCESSORIES

- SIDEARM 2'
- DMX IRIS
- ROSCO I-CUE
- ROPE LIGHT WORKS

TYPICAL

R05 --- COLOR
F>C --- PURPOSE

T --- TEMPLATE
13 --- UNIT #
114 --- CHANNEL

R05 --- COLOR
F>C --- PURPOSE

T 13 --- UNIT #
114 --- CHANNEL

NOTES

- ALL MOVERS HUNG BELOW CAT WALK
- ELECTRIC TRIMS TAKEN TO PIPE
- BORDERS ARE 8'-6"W; PIPES AT MAX OUT
- LEGS ARE 18"H x 9"W; PIPES AT MAX OUT
- ALL COLOR AND TEMPS BEYOND REP TO BE PROVIDED BY INCOMING PRODUCTION
- ALL REP FRONT AND SIDE LIGHTS INCLUDE R119 FROST W/ COLOR.
- TPAC MAINTAINS A STOCK OF ADDITIONAL SOURCE 4 ERS AND PARS AS WELL AS SPARE BARRELS AND SINGLE CELL CYC UNITS. PLEASE CONTACT LIGHTING SUPERVISOR FOR SPECIFICS

DISCLAIMER

THIS DRAWING REPRESENTS VISUAL CONCEPTS AND CONSTRUCTION SUGGESTIONS ONLY. IT DOES NOT REPLACE THE KNOWLEDGE AND ADVICE OF A LICENSED STRUCTURAL ENGINEER. THE DESIGNER IS UNQUALIFIED TO DETERMINE THE STRUCTURAL APPROPRIATENESS OF THIS DESIGN AND WILL NOT ASSUME RESPONSIBILITY FOR IMPROPER ENGINEERING OR USE.

DRAWN BY: Jess Choi
DATE: 01/16/2024
REVISED:

DRAWING:
1 OF 1



SCALE 1/4" = 1'-0"

199 Chambers St. New York, NY 10007
tech@tribecapac.org 212-346-8552
THEATRE II LIGHTING REPERTORY PLOT

*PLEASE NOTE- THIS UNIT IS NOT PERMANENTLY CIRCUITED AND REQUIRES ADDITIONAL TIME AND CREW FOR OPERATION.